



# MONTHLY MEMBERSHIP PROGRESS REPORT

District 2 A3

Results as of: 12/31/2014

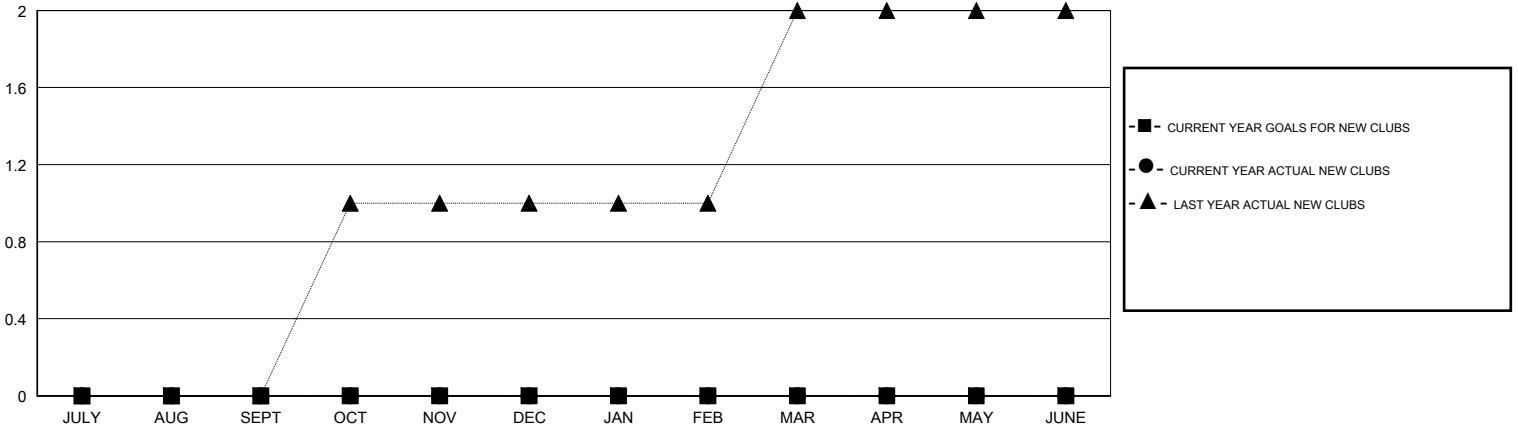
GMT: HAL GRIFFIN

LOCATION TEXAS

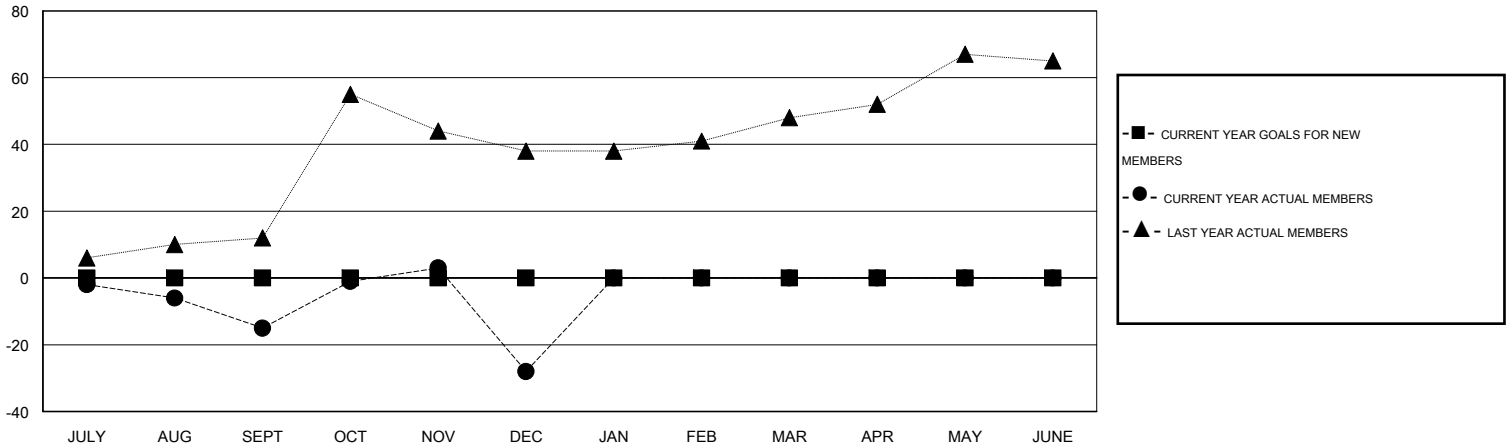
GMT CA 1

Clubs					Members				
RESULTS FOR 2014-2015					RESULTS FOR 2014-2015				
QUARTER	NEW CLUB GOAL	NEW CLUBS	DROPPED CLUBS	NET GAIN/LOSS	QUARTER	NEW MEMBER GOAL	CHARTER AND NEW MEMBERS ADDED	DROPPED MEMBERS	NET GAIN/LOSS
JULY/AUG/SEPT	0	0	0	0	JULY/AUG/SEPT	0	29	44	-15
OCT/NOV/DEC	0	0	2	-2	OCT/NOV/DEC	0	59	72	-13
JAN/FEB/MAR	0	0	0	0	JAN/FEB/MAR	0	0	0	0
APR/MAY/JUNE	0	0	0	0	APR/MAY/JUNE	0	0	0	0

GOALS AND ACTUAL NEW CLUBS CUMULATIVE



GOALS AND ACTUAL MEMBERS CUMULATIVE



DROPPED CLUBS: 2	29 CLUBS OF 58 ADDED 1 OR MORE NEW MEMBERS	<b>GENDER DISTRIBUTION</b>
		MALE 800 (65.68%)
		FEMALE 418 (34.32%)
<b>DROPPED MEMBERS</b>	<a href="#">CLICK HERE FOR HEALTH ASSESSMENT DATA</a>	FAMILY UNIT MEMBERS 210
DECEASED 10		HEAD OF HOUSEHOLD 99
CLUB CANCELLED 46		NON-HEAD OF HOUSEHOLD 111
OTHER 60		
<b>TOTAL 116</b>		